

Datasheet

www.whatsupgold.com**Use WhatsConnected To**

- **Discover** everything connected to your network -- devices, servers, VMware virtual machines, deployed software, VLANs, port-to-port connectivity and other resources automatically or ad-hoc
- **Map, inventory and visualize** your network topology and interdependencies
- **Support your audit and compliance-centric initiatives (SOX, HIPAA, PCI, FISMA, etc)** with accurate and up-to-date network and server inventory information and network diagrams
- **Manage and track all of your assets** with enhanced inventory discovery that filters and exports a wide variety of system information, including software, OS, BIOS inventory and warranty status
- **Document and archive** your asset inventory (Routers, Switches, Wireless Access Points, Printers, Windows, Unix, Linux, Macintosh, Firewalls, Hubs, IP Phones, and more)
- **Track and report** on your network evolution
- **Publish** network topology maps through Microsoft® Visio™
- **Troubleshoot connectivity issues** with available Layer 2 trace and IP/Mac Finder tools
- **Capture and compare** running and startup configurations for network devices with the WhatsConnected Capture Configuration tool
- **Dynamic auto-discovery and mapping** of new devices, port-to-port connectivity changes, or updates to physical to virtual associations without end user intervention
- **One click map exports** to WhatsUp Gold

WhatsUp® Gold WhatsConnected™

Automated Discovery, Inventory, Asset Reporting and Topology Mapping for physical and virtual infrastructures

Improve Visibility, Improve Performance

WhatsUp Gold WhatsConnected allows you to easily discover, map, search, inventory and document your entire infrastructure – network devices, servers, deployed software, VMware virtual machines, VLANs and port to port connectivity– quickly and efficiently, in a matter of minutes. With WhatsConnected you can easily document your infrastructure inventory, topology maps and network diagrams for process and regulatory compliance; ensure complete accuracy; and give your operations teams the power to immediately visualize how everything is connected.

Understand Your Network

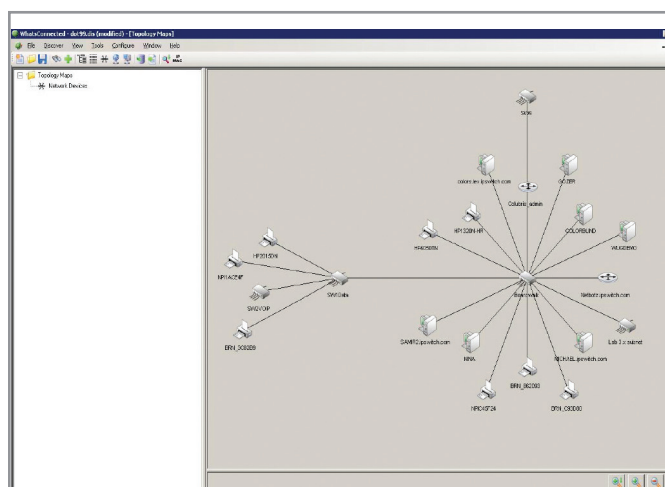
If you can't understand how devices in your network are connected, their interdependencies and where they are located, then locating problems and resolving them before the impact of a failure is noticed is much more difficult than it needs to be. Establishing that device connectivity is not the source of the problems is one of the initial steps to troubleshooting network issues.

Without WhatsConnected, connectivity between devices or systems has to be manually documented by network management personnel, and this tedious process requires significant time and effort to validate and document physical connectivity, and keep topology information up-to-date. WhatsConnected automates this process for you, so you don't have to crawl through wiring closets to visually verify connectivity, and now goes a step further to discover, inventory and map out your virtual network as well.

The Industry's Most Comprehensive Discovery and Mapping Solution

WhatsUp Gold WhatsConnected moves far beyond typical IP discovery tools by assembling information from every device in the network and providing detailed topology maps. You will gain access to critical network information such as physical connectivity, device type, asset/inventory and configuration information, as well as VMware discovery and classification. With the total insight offered by WhatsConnected, you can understand your network from top to bottom, and focus on keeping it running securely and at peak performance. The tool's inventory capability provides platform identification and classification for Routers, Switches, Wireless Access Points, Printers, Windows, Unix, Linux, Macintosh, Firewalls, Hubs, IP Phones, and more from all the most widely deployed network manufacturers, including:

- Cisco/Linksys
- Foundry
- HP Procurve
- Nortel/Bay Networks
- 3COM
- Extreme
- Netgear
- Dell PowerConnect
- DLink
- SMC
- Alcatel
- Allied Telesyn
- VMware



Get complete and accurate topology views of your network.

WhatsConnected Benefits Summary

WhatsConnected gives you power over your network infrastructure allowing you to:

- **Save time:** Spend time effectively managing your network instead of wasting it on manual documentation of your network topology and networked devices
- **Optimize hardware investments:** Identify “forgotten” hardware or hardware without IP addresses that can then be decommissioned, reassigned to new tasks, or moved to an internal cloud.
- **Simplify troubleshooting tasks:** Rely on WhatsConnected connectivity and dependency maps to quickly identify the root cause of connectivity problems and lower MTR (mean time to repair)
- **Compliance Support:** Seamless access, accurate network and server inventory information and network diagrams for audit to and compliance-centric initiatives (SOX, HIPAA, PCI, FISMA and others)

Get your free 30-day Evaluation:
<http://www.whatsupgold.com>



10 Maguire Road
 Lexington, MA 02421
 USA
 (781) 676-5700

Kingsfordweg 151
 1043 GR Amsterdam
 The Netherlands

Ipswitch Japan 株式会社
 〒106-0047
 東京都港区南麻布4-11-22
 南麻布T&Fビル8階

Discover: View All Connections and Address Potential Issues

WhatsConnected uses a number of innovative layer 2 and layer 3 discovery technologies, including ARP, SNMP, SSH, Virtual Infrastructure Management, IP addressing, ICMP and LLDP in combination with vendor proprietary mechanisms to discover everything connected to your network and build a complete and accurate picture of network devices and port-to-port connections.

Map: See Your Network in a Whole New Light

Gaining insight into the network and understanding how devices are connected has never been easier. WhatsConnected simplifies the tedious task with auto-generated topology maps that give you full visibility into the physical, logical and virtual connectivity, including IP and VLAN-specific information. You also have the option to publish network maps in Microsoft® Visio™ with just one mouse click.

Search: Pinpoint Specific Connections in Seconds

Now you can quickly search and discover how devices are connected – saving precious time and effort in the process. With detailed device views, you can quickly zero in to find out what's connected to what. Additionally with built-in tools such as Layer 2 Trace and IP/MAC Finder, WhatsConnected offers the industry's fastest approach to finding the location and validating connectivity of any device on the network.

Document: Ensure your infrastructure inventory is complete and up-to-date

WhatsConnected provides comprehensive network inventory and configuration information - supporting the reporting/documentation needs of your internal business process (e.g. ITIL) and regulatory requirements like SOX, FISMA, PCI DSS and HIPAA. And since you easily export this information on CSV or Excel formats with a couple of mouse clicks, your entire team will know exactly what resources are on your network, where they are and how they are connected at all times, even when your network grows, your office moves, or your datacenter resources get consolidated.

Manage: Assets and Inventory

Gather, filter and export a wide variety of inventory and configuration information across networking devices and systems:

Networking Devices Asset Information

- Manufacturer / Model
- Serial Number
- Hardware / Software / Firmware Versions
- Chassis / Module Inventory
- Power Supplies / Fans

Configuration Information

- Interfaces
- Bridge Ports
- Switch Ports
- VLANs

Systems Inventory

- All available system component details (CPU, RAM, disks, etc)
- Operating system version & patch information
- Any installed software packages
- Support for automatic update of warranty information (Dell and HP) based on integration with their support websites

For a free trial of WhatsConnected, please visit: www.whatsupgold.com/products/download

More information on WhatsConnected is available at: www.whatsupgold.com/products/whatsconnected