

Overview

Managing multiple network security installations can be a challenging and time-consuming task. Administrators need to define security policies, configure applications, monitor the actual state of all devices, and maintain device software and configurations to keep them up-to-date.

Astaro Command Center™ allows for central management of Astaro Security Gateway (ASG) appliances. It is intended to provide a general overview of the state of each device, their version, current load, and critical security events. The information is accessible via a graphical web-based interface offering various view options which allow managing of up to some hundred devices from one central system. The new user interface is based on AJAX (Asynchronous JavaScript And XML) which displays changes of any data immediately without additional delays resulting from screen refreshes.



Inventory Management provides comprehensive information about static parameters of each device such as CPU, hard disk, memory, etc. Extensive **Monitoring** features allow administrators to watch critical device information in real-time. Various view options allow either viewing the current health level of each device at-a-glance or display in depth detailed information for specific devices or categories. **System Maintenance** offers centralized control of updates and system shutdowns/restarts. **Single-sign-on WebAdmin access** eases configuration management via centralized WebAdmin login for all devices. **Role-based Multi-admin support** allows the definition of different administrators with different roles for using these management functions within Astaro Command Center concurrently.

View Options

Astaro Command Center offers various view options to provide up-to-date information about critical components of all systems within a complete network infrastructure.

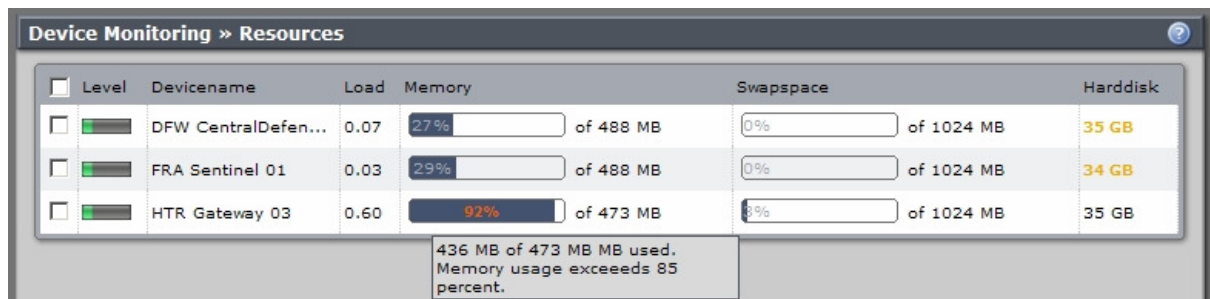
To allow efficient management of a huge number of devices within a network you can aggregate devices into groups. These groups can be managed and selected from a **Tree-View** sorting them in a hierarchical way. By selecting a certain device group all included devices will be shown within the main view window where you can select some of these devices for further management.



Dashboard-Views provide at-a-glance information of the most important system parameters of all selected devices. Colour coded bars allow rapid viewing of the health of each device allowing administrators to quickly see which gateways require immediate action.



To get detailed information about a specific category such as detected threats or used resources you can use **List-Views** to get status information of all parameters for the selected category.



Level	Devicename	Load	Memory	Swapspace	Harddisk
<input type="checkbox"/>	DFW CentralDefen...	0.07	27% of 488 MB	0% of 1024 MB	35 GB
<input type="checkbox"/>	FRA Sentinel 01	0.03	29% of 488 MB	0% of 1024 MB	34 GB
<input type="checkbox"/>	HTR Gateway 03	0.60	92% of 473 MB	8% of 1024 MB	35 GB

436 MB of 473 MB MB used. Memory usage exceeds 85 percent.

A **World Map** allows easy localization of specific devices within a large global network. The geographic location of the device is determined by tracking its IP address (Geo-IP).

By moving the mouse over a device icon a popup window will appear displaying at-a-glance information for this device. A zoom function allows navigation to specific regions of interest.



Features

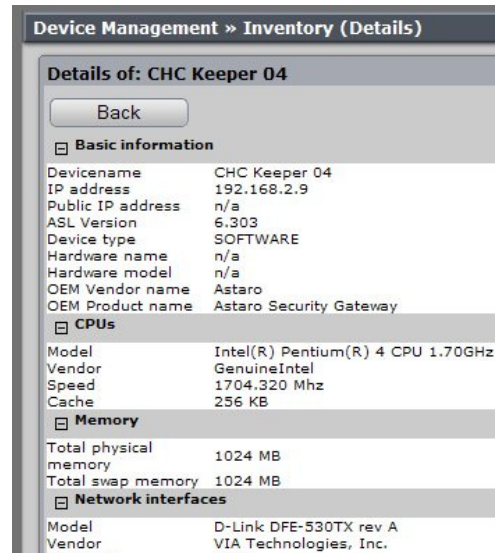
Astaro Command Center V1.3 contains the following key features:

Device Management

Astaro Command Center keeps a complete hardware inventory of all devices within a network including information about:

- SW version
- CPU
- Memory
- Hard disks
- Network Interfaces
- CD-ROM drives

All Astaro Security Gateway devices will be registered into the ACC system in a semi-automatic way and automatically integrated into device groups.



Device Monitoring

One fundamental feature of Astaro Command Center is the ability to track critical system parameters in real-time.

These parameters are grouped into four main categories:

Threat

- Packet filter violations
- Detected viruses
- Detected intrusions
- Portscans
- Failed Logins

License

- active/max users
- active/max connections
- Base license
- Subscriptions (left time)

Version

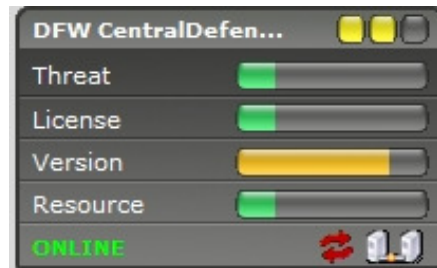
- Up2Date packages (*avail./failed*)
- Virus Pattern updates (*avail./failed*)
- IPS Pattern updates (*avail./failed*)

Resource

- CPU load
- Memory usage
- available disk space

In addition real-time status information is tracked for High Availability bundles, like Master & Slave name, last contact and takeover status.

All parameters of a category can be monitored separately within various list views but are also aggregated into summarized values per category. These values are then displayed on the dashboard as color coded bars showing the average health level for that category on a specific device. Additional icons allow for fast recognition of the actual status of high availability bundles.



Maintenance

Astaro Command Center also offers features for centralized system maintenance tasks such as:

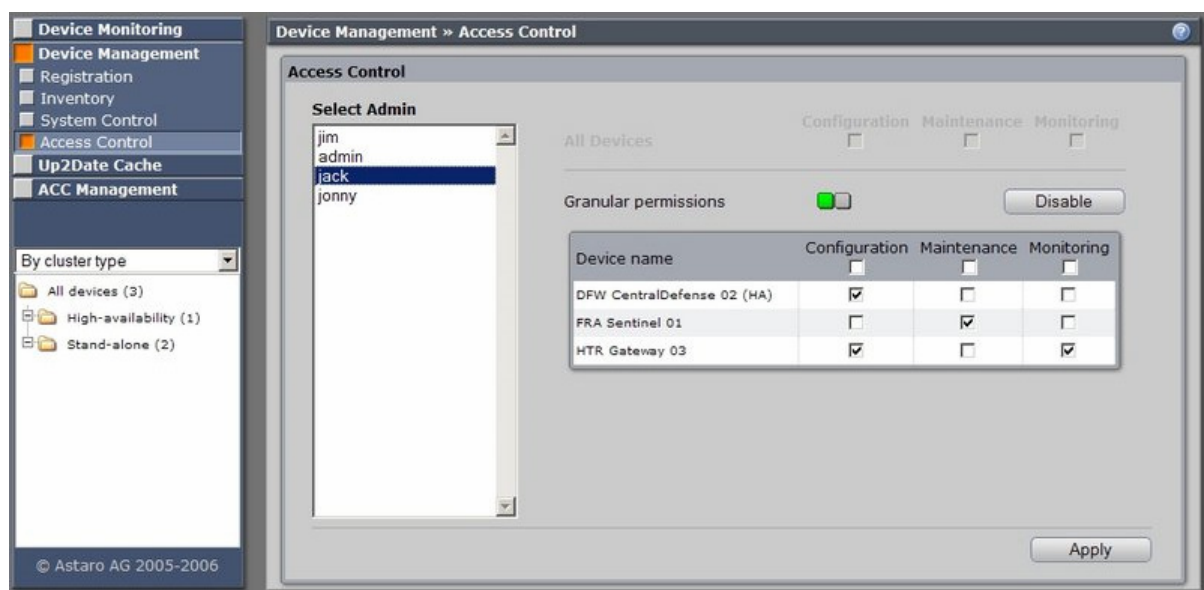
- Updates (System and Pattern)
- Shutdown
- Reboot



Role-based Multi-Admin support

To allow distributing administrative tasks and workloads among different people Astaro Command Center allows the definition of multiple administrators with different roles and permissions.

Four different roles are pre-defined controlling overall system, device, and user management. In addition administrators can be granted device-based permissions for managing, configuring and monitoring only specific devices or device groups. As an option these permissions can also be granted automatically to newly confirmed devices.



Single-sign-on WebAdmin access

To ease central changes of device configurations Astaro Command Center offers Single-sign-on WebAdmin access. Thus, administrators have to login only once to access any ASG within the network.

Astaro Security Gateway Up2Date Cache

The Astaro Command Center server can act as a local Up2Date server (cache) providing pre-fetched Up2date packages for all Astaro Security Gateways within a customer's network environment including those ASGs which don't have a direct internet connection. As each package is only downloaded once, this allows for a significant reduction of internet traffic, especially within environments with many installed ASGs.

System Requirements

Astaro Command Center is shipped as a software appliance (ISO image) to be installed on any dedicated PC which meets the following minimal requirements:

- Intel Pentium IV (2.4 GHz) / AMD Athlon XP 2500
- 512MB RAM (1GB recommended)
- IDE or SCSI CDROM
- 40 GB hard disk drive
- 1 PCI NIC

In order to support up to 500 devices, the PC should meet at least the following requirements:

- Dual Intel XEON / Dual AMD Opteron
- 4 GB RAM
- 160 GB hard disk drive (RAID)

As everything will be installed from one CD, there are no additional software requirements.

Supported Clients are:

- ASL/ASG software V6, starting from version 6.303

Virtual Appliance

ACC V1.3 will be also made available as a VMWare virtual appliance. Similar to the ASG virtual appliance, ACC can be easily deployed within VMWare virtualized environments, such as VMWare Server, VMWare ESX Server, VMWare Workstation or VMWare Player, by using a pre-configured/pre-installed ACC ISO.