



## Barracuda Link Balancer

Aggregates multiple Internet connections

Designed to scale for high bandwidth requirements and provide business continuity for an organization of any size, the Barracuda Link Balancer optimizes the use of multiple Internet links, such as T1s, T3s, DSL and cable connections. By combining links from one or multiple Internet service providers, organizations reduce the need to purchase high cost links to handle daily Internet usage. By providing automatic failover in the event of link failure, the Barracuda Link Balancer helps ensure that an organization's network is always connected to the Internet.

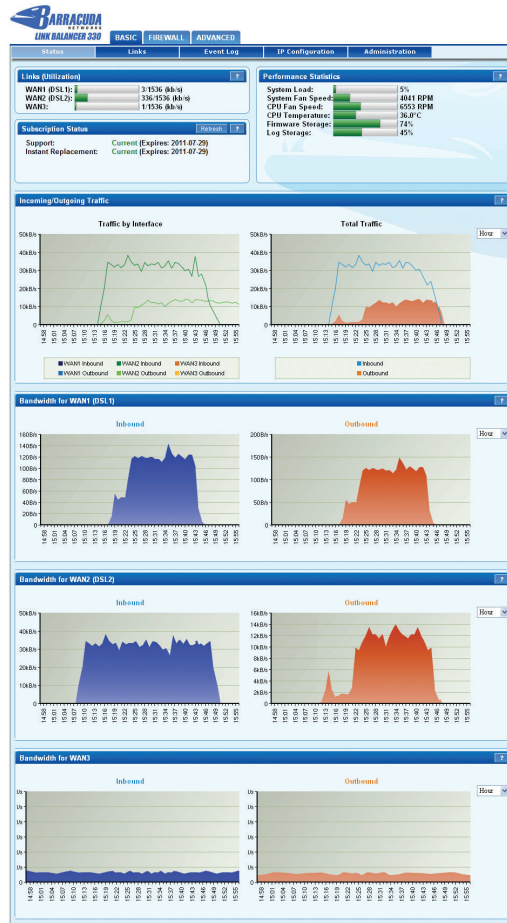
### Simple Bandwidth Management for High Availability

In today's organizations, Internet bandwidth and availability is mission-critical for day-to-day operations. The Barracuda Link Balancer aggregates client and server Internet bandwidth to provide optimal access to multiple high speed connections. With bandwidth management and Quality of Service (QoS) features, the Barracuda Link Balancer prioritizes bandwidth to mission-critical applications.

The Barracuda Link Balancer provides administrators with tools to automatically prioritize critical Internet applications. For example, Web browsing and email can be guaranteed bandwidth while peer-to-peer applications and media streaming can be assigned a lower priority. The flexibility to manage priority of Internet usage ensures low-priority bandwidth-intensive applications never interfere with business-critical operations. The Barracuda Link Balancer also includes a network firewall capable of enforcing access control lists (ACLs), port forwarding, NAT and DNS forwarding. Further, DHCP and DNS caching services are provided and site-to-site VPN connections are enabled.

### Easy-to-Use and Maintain

Installed at the network perimeter, administrators can deploy the Barracuda Link Balancer with or without a separate network firewall to consolidate the management of network security and traffic aggregation. With an easy-to-use Web user interface, the Barracuda Link Balancer allows administrators to easily define, manage and control Internet links.

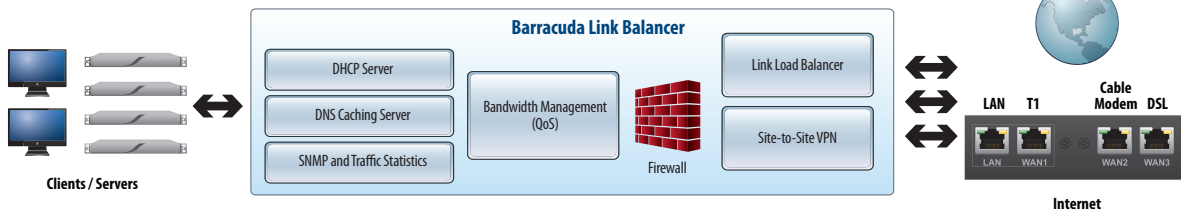


The Barracuda Link Balancer displays statistics on incoming and outgoing traffic.

BARRACUDA LINK BALANCER

MODEL  
230  
330  
430

### Barracuda Link Balancer Architecture

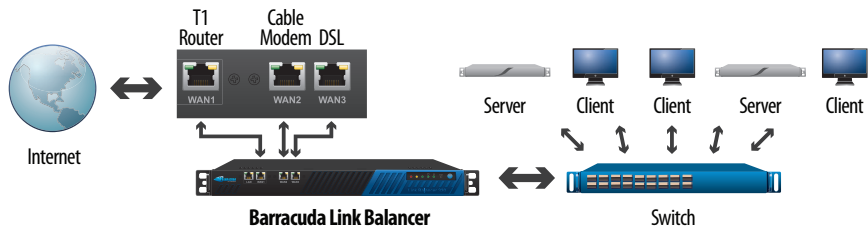




# BARRACUDA LINK BALANCER

MODEL  
230  
330  
430

## Typical Deployment



## TECHNICAL SPECIFICATIONS

### Security Features

#### LINK BALANCING

- WAN and Internet connection link balancing
- Inbound link balancing
- Traffic aggregation
- Automated link detection and failover
- Link health monitoring
  - Ping
  - HTTP
  - DNS
  - TCP port checking
- Link speed assignment and weighting

#### TRADITIONAL FIREWALL

- Network Address Translation (NAT)
- 1:1 NAT
- Port forwarding
- Firewall IP Access Control Lists (ACLs) and rules
- DDoS protection
- Firewall transparency

#### NETWORK SERVICES

- DHCP server
- DNS caching server
- DNS request forwarding
- Site-to-site VPN
- Outbound Source NAT
- VLAN support

#### BANDWIDTH MANAGEMENT AND QUALITY OF SERVICE (QOS)

- Application-based priority assignments
- Custom port-based application definition
- Preconfigured protocols:
  - Web
  - Email
  - FTP
  - DNS
  - Network Authentication
  - Terminal Services
  - SIP

### System Features

#### ADMINISTRATORS

- Web-based interface
- Traffic and performance monitoring
- Event logging
- SNMP support
- Secure remote administration

### Hardware Features

#### CONNECTORS

- Standard VGA
- PS/2 keyboard/mouse
- Ethernet (see chart below)
- Serial port (DB-9)

#### POWER REQUIREMENTS

- AC input voltage 100-240 volts
- Frequency 50/60 Hz

### Support Options

#### ENERGIZE UPDATES SUBSCRIPTION

- Standard technical support
- Firmware maintenance
- Security updates

#### INSTANT REPLACEMENT SUBSCRIPTION

- Replacement unit shipped next business day
- 24x7 technical support

MODEL COMPARISON	MODEL 230	MODEL 330	MODEL 430
<b>CAPACITY*</b>			
Internet Link Connections	2	3	7
Maximum Throughput	35 Mbps	65 Mbps	250 Mbps
<b>HARDWARE</b>			
Rackmount Chassis	1U Mini	1U Mini	1U Mini
Dimensions (in)	16.8 x 1.7 x 14	16.8 x 1.7 x 14	16.8 x 1.7 x 14
Dimensions (cm)	42.7 x 4.3 x 35.6	42.7 x 4.3 x 35.6	42.7 x 4.3 x 35.6
Weight (lbs/kg)	12 / 5.4	12 / 5.4	12 / 5.4
Ethernet	3 x 10/100	2 x 10/100 3 x 1 Gigabit	6 x 10/100 3 x 1 Gigabit
Ethernet Passthrough		1 x Gigabit	1 x Gigabit
AC Input Current (Amps)	1.0	1.2	1.2
<b>FEATURES</b>			
Link Balancing	✓	✓	✓
Link Health Monitoring	✓	✓	✓
Link Failover	✓	✓	✓
Traffic Aggregation	✓	✓	✓
Network Traffic Firewall	✓	✓	✓
Local DHCP and DNS	✓	✓	✓
Traffic Monitoring	✓	✓	✓
SNMP	✓	✓	✓
Automated WAN Provisioning	✓	✓	✓
Site-to-Site VPN	✓	✓	✓
Bandwidth Management and QoS	✓	✓	✓
Ethernet Bypass Hardware		✓	✓
Clustering/High Availability		✓	✓
Customizable Branding			✓
API			✓

US 15.0

Specifications subject to change without notice.

\*Capacity depends on environment and selected options.

Copyright © 2010 Barracuda Networks Inc. • 3175 S. Winchester Blvd., Campbell, CA 95008 • 1-888-ANTI-SPAM (1-888-268-4772) • www.barracuda.com