

# FatPipe MPVPN

Highest level of security, fault tolerance, and speed for Mission Critical VPNs

MAKE YOUR VPN 900% MORE SECURE,  
AND 300% MORE REDUNDANT,  
RELIABLE, AND FAST

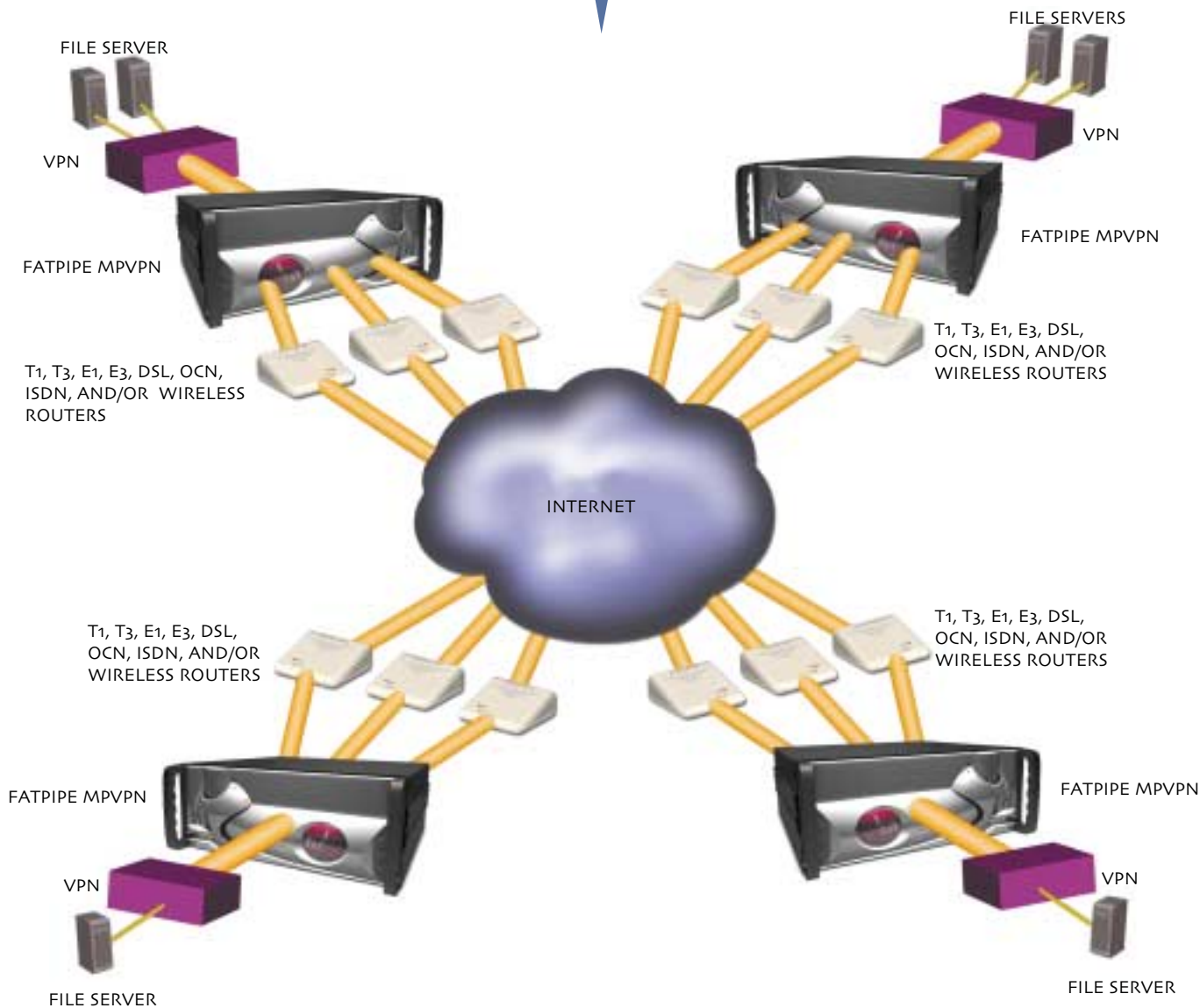
The logo features the word "FAT" in large, bold, red 3D block letters. A thin, glowing green ring is positioned behind the letter "A". To the right of "FAT", the word "Pipe" is written in a red, cursive script font. Below "FAT Pipe", the letters "MPVPN" are displayed in a red, blocky font with a slight 3D effect.

FAT Pipe  
MPVPN

*NEW! Fault tolerance  
for Remote VPN  
users, Enhanced load  
balancing methods,  
and Route  
Control Tools*

MPVPN® takes any VPN and makes it up to 300% more reliable and redundant, 300% faster, and provides up to 900% more security for WAN data transmissions. MPVPN dynamically balances load over multiple lines and ISPs without the need for BGP programming. MPVPN can take WANs with an uptime of 99.5% or less and make them 99.999988% or higher, providing a virtually infallible WAN.

MPVPN provides customers with confidence that their VPNs will stay "up" at all times regardless of failures of the network's services or hardware.



## SECURITY, REDUNDANCY, RELIABILITY & SPEED FOR VPNS

FatPipe Networks is the sole developer of patented router clustering technology specifically designed to provide high security, redundancy, reliability, and speed for Virtual Private Networks (VPNs).

MPVPN® enables customers' mission critical VPNs to stay "up" at all times by transcending the failures of any WAN line, ISP, router or other individual hardware components. Security of data transmission is also increased up to 900% with FatPipe's patented MPsec™, which breaks each data stream down to the packet level, randomly sends the packets over multiple connections, and reassembles the packets at the receiving end. MPsec makes it virtually impossible for hackers or intruders to trap data and decrypt confidential information.

## YOU CAN NOT AFFORD TO GO DOWN

- Network outages and degradations are causing significant losses in productivity and revenue, ranging from less than 1/10th of 1% of total revenue to almost 1% (up to \$74.6 million per year). Infonetics Research, The Cost of Downtime, 2003; February 2003
  - One third of U.S. businesses face the loss of critical data or operational capability in the wake of a disaster, unless investments toward disaster preparedness planning are made. Gartner Group; U.S. Firms Unprepared for Disasters; March 2003
  - 2000 study of downtime at 85 large organizations (over 1,000 employees), found an average of over \$32 million in revenue and productivity losses. Infonetics Research, The Cost of Downtime, 2003; February 2003
  - The growth of network complexity has produced many more potential points of degradation and failure. Infonetics Research, The Cost of Downtime, 2003; February 2003
- 
- **MPsec:** FatPipe's patented Multi-Path Security provides up to nine times more security, making it virtually impossible to trap data flow and decrypt information in correct sequence.
  - **Fault Tolerance for Remote VPN Users:** FatPipe MPVPN uses an enhanced feature that provides redundancy for remote VPN clients using IPSec, PPTP, and several other custom encryption algorithms, ensuring connectivity even when a WAN line fails.
  - **SmartDNS:** FatPipe's patent-pending technology intelligently balances the load across all available lines for inbound IP traffic resulting in efficient delivery of information.
  - Supports multi-homing connections over multiple lines without ISP cooperation or expensive routers with programming capabilities.
  - Ability to see VPN status at all locations.
  - **Reverse Mapping:** Allows companies to conserve IP addresses and direct application traffic to specific servers.
  - **Proxy ARP:** No need to reset gateway IP address for client computers in a LAN, saving time and money.
  - **Enhanced Route Control Tools:** MPVPN's improved routing options give Administrators greater control over IP traffic delivery, allowing them to define routing criteria based on application and provider.
  - An automatic unit failover option is available to customers that want a standby unit to backup the active MPVPN unit.
  - **Full WARP functionality:** MPVPN incorporates all of the features and benefits of FatPipe WARP.

WITH FATPIPE MPVPN	WITHOUT FATPIPE MPVPN
<ul style="list-style-type: none"> <li>• 99.999988% uptime: the highest redundancy and reliability for VPN infrastructures</li> <li>• Combines speed of multiple connections for up to 300% the speed</li> <li>• Up to 900% more secure than normal VPN data transactions</li> <li>• Web-based management tools to monitor speeds and check status of routers and MPVPN unit</li> <li>• Emergency e-mail and paging alerts</li> <li>• Remote reboot</li> <li>• Auto failover</li> <li>• No BGP Programming</li> </ul>	<ul style="list-style-type: none"> <li>• No protection from single points of failure including ISP, router CSU/DSU and line failures</li> <li>• Speed limited by single line connection</li> <li>• No additional security to protect against hackers</li> <li>• Cannot monitor speed of router; onsite personnel required to implement or monitor changes to the router</li> <li>• Need to purchase e-mail/paging programs</li> <li>• Must be on site to reboot</li> <li>• No failover</li> <li>• May require BGP Programming</li> </ul>

# MPVPN

FatPipe MPVPN takes any VPN and makes it 9 times more secure and 3 times more reliable, redundant and fast. MPVPN comes in three standard speeds with higher speeds available upon request.



## 2 Mbps

### LOAD BALANCING

- Round Robin
- On Failure
- Response Time
- Policy Routing

### MANAGEMENT

- Java interface
- Network configuration
- Emergency paging and e-mail alerts
- Automatic failover
- Speed Chart and Speed Meter
- SNMP ready

### SECURITY

- Inherent NAT-based Firewall
- Reverse Mapping

### WARRANTY

- 1 year full hardware warranty
- Includes 90 days of free technical support

### DIMENSIONS

- 2.75"Hx12.5"Wx10.75"D (per unit) 1U  
Industry standard chassis

### WEIGHT

- 24.5 lbs (per unit)

### NETWORK INTERFACE

- Two 10/100 BASE Fast Ethernet

## 50/155 Mbps

Higher speeds available upon request

### LOAD BALANCING

- Round Robin
- On Failure
- Response Time
- Policy Routing
- Fastest Route

### MANAGEMENT

- Java interface
- Network configuration
- Emergency paging and e-mail alerts
- Automatic failover
- Speed Chart and Speed Meter
- SNMP Ready

### SECURITY

- Inherent NAT-based Firewall
- Reverse Mapping

### WARRANTY

- 1 year full hardware warranty
- Includes 90 days of free technical support

### DIMENSIONS

- 7"Hx19"Wx17.8"D (per unit) 4U  
industry standard rack-mount chassis
- High cooling, high reliability industrial design

### WEIGHT

- 43 lbs (per unit)

### NETWORK INTERFACE

- Four 10/100 BASE Fast Ethernet
- Fast Ethernet Fiber and Gigabit Ethernet available
- Additional WAN ports available



FatPipe Networks  
4455 South 700 East, 1st Floor, Salt Lake City, Utah 84107  
www.fatpipeinc.com • Info@fatpipeinc.com  
Tel: 800.724.8521 • 801.281.3434 • Fax: 801.281.0317

\*2003 FatPipe Networks. FatPipe, the FatPipe logo, FatPipe Networks™, MPVPN™, MPSec™, and MPFR™ are trademarks or registered trademarks of Ragula Systems Development Company d.b.a. FatPipe Networks. All other product names mentioned herein are trademarks of their respective owners.